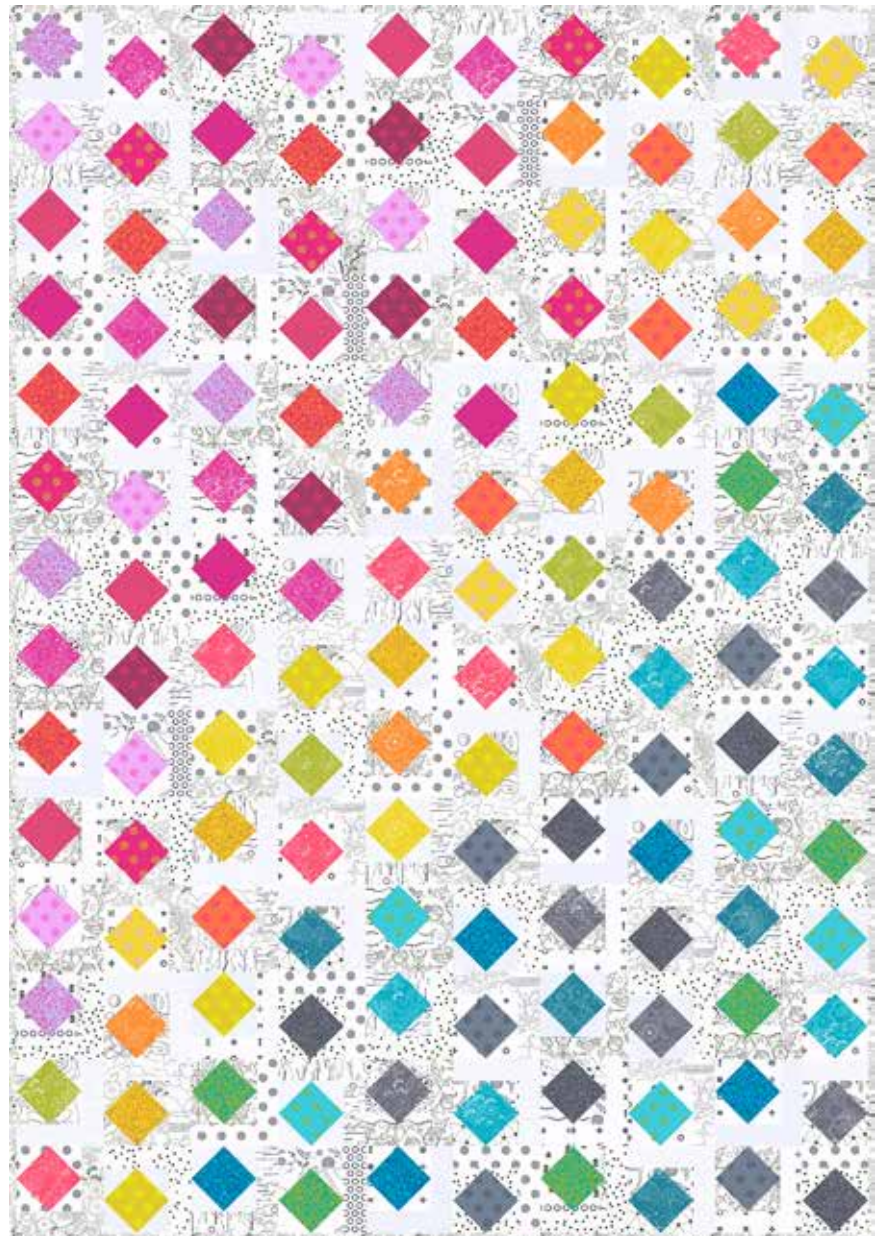
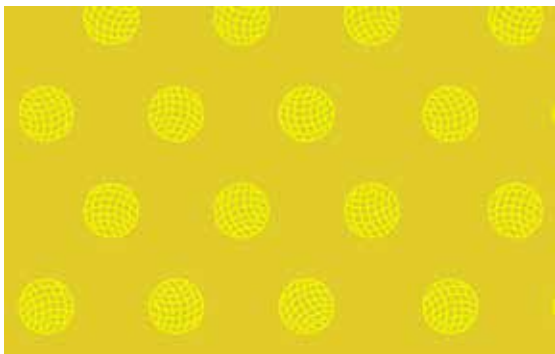


Sun Print 2016

BY ALISON GLASS



About Sun Print 2016

Copy to come. — Alison Glass

Quilt designed by: **Alison Glass**

Quilt Size: **58½" x 84"**

andoverfabrics.com

andover



makower uk
The Henley Studio

Free Pattern Download Available

1384 Broadway New York, NY 10018
Tel. (800) 223-5678 • andoverfabrics.com

Sun Print 2016 Quilt



Introducing Andover Fabrics new collection: **Sun Print 2016** by Alison Glass
 Quilt designed by Alison Glass

Quilt finishes 58½" x 84"

70 Block X: 6" x 6"

56 Block Y: 6" x 6"

14 Block Z: 4½" x 6"

Jewel-tone fabrics are surrounded by white and black strips in this easy-to-make lap quilt. Arrange the two dozen bright fabrics any way you want, or place them in rainbow-color order as shown.

Fabric Requirements

	Yardage	Fabric	
Fabric A	*blocks	1¼ yards	8070-C
10 Whites	blocks	⅝ yard each	
8068-C	8069-C	8070-C2	8071-C
8072-C	8073-C	8074-C	8075-C
8137-L	8138-L		
24 Brights	blocks	fat ¼ yard each	
8070-C1	8070-G	8070-O	8070-P
8070-R	8070-T1	8070-T2	8070-Y
8137-C	8137-G	8137-O	8137-P
8137-P1	8137-R	8137-T	8137-Y
8138-C	8138-E	8138-O	8138-P
8138-P1	8138-T	8138-Y	8138-Y1
Backing		5 yards	8137-L
*includes binding			

Cutting Directions

Note: Read assembly directions before cutting patches. All measurements are cut sizes and include ¼" seam allowances. A fat ¼ is an 18" x 20"-22" cut. WOF designates the width of fabric from selvedge to selvedge (approximately 42" wide).

Fabric A	Cut (8) strips 2½" x WOF for binding Cut (52) squares 2¾" x 2¾"
10 Whites	From each: Cut (11-12) rectangles 2" x 6½" (126 total) Cut (12-13) rectangles 2" x 5" (140 total) Cut (48 or 52) squares 2¾" x 2¾" (560 total, cut in groups of 4)
24 Brights	From each: Cut (5-6) squares 5" x 5" (140 total)
Backing	Cut (2) panels 33" x 90", pieced to fit quilt top with overlap on all sides

Making the Quilt

- The centers of the blocks are made with quick stitch-and-flip piecing methods. Draw a diagonal line on the wrong side of each white 2¾" square. Referring to Diagram 1, place a marked square on a bright 5" square, right sides together, aligning raw edges at the corner. Stitch on the drawn line; trim away and discard excess fabric. Press open. Repeat on the adjacent corner, watching orientation of the sewing (Diagram 2). Repeat on the remaining corners (Diagram 3). Repeat these steps with the bright squares to make 140 block centers.

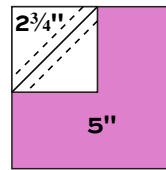


Diagram 1

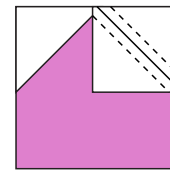


Diagram 2

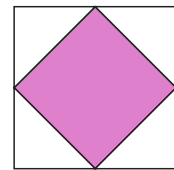
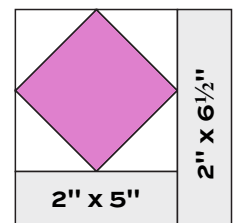


Diagram 3

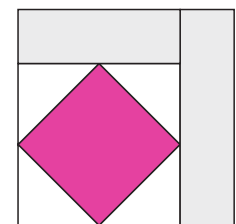
- Block Xs are in columns 1, 3, 5, 7, and 9. Block Ys are in columns 2, 4, 6, and 8. The 14 Block Z are in column 10. Note that the colors are in rainbow spectrum order that moves from the top left (purples and pinks) to the bottom right (teals, blues, and grays), in a somewhat diagonal arrangement. The oranges, greens, and yellows are positioned in between.

- Referring to the Quilt Diagram for color placement, select 14 bright block centers for column 1. Referring to the Block X diagram, sew a white 5" strip to the bottom of a block center. Press seam allowances away from the center. Sew a white 6½" strip to the right side. Repeat to make 14 Block X, and join them to make column 1.



Block X - Make 70

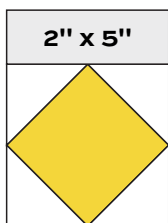
- Select 14 bright block centers for column 2. Referring to the Block Y diagram, sew a 5" strip to the top of a block center. Press seam allowances away from the center. Sew a 6½" strip to the right side. Make 14 Block Y, and join them to make column 2. Sew column 2 to column 1. Repeat these steps to make columns 3-9. Join the columns in order.



Block Y - Make 56

Sun Print 2016 Quilt

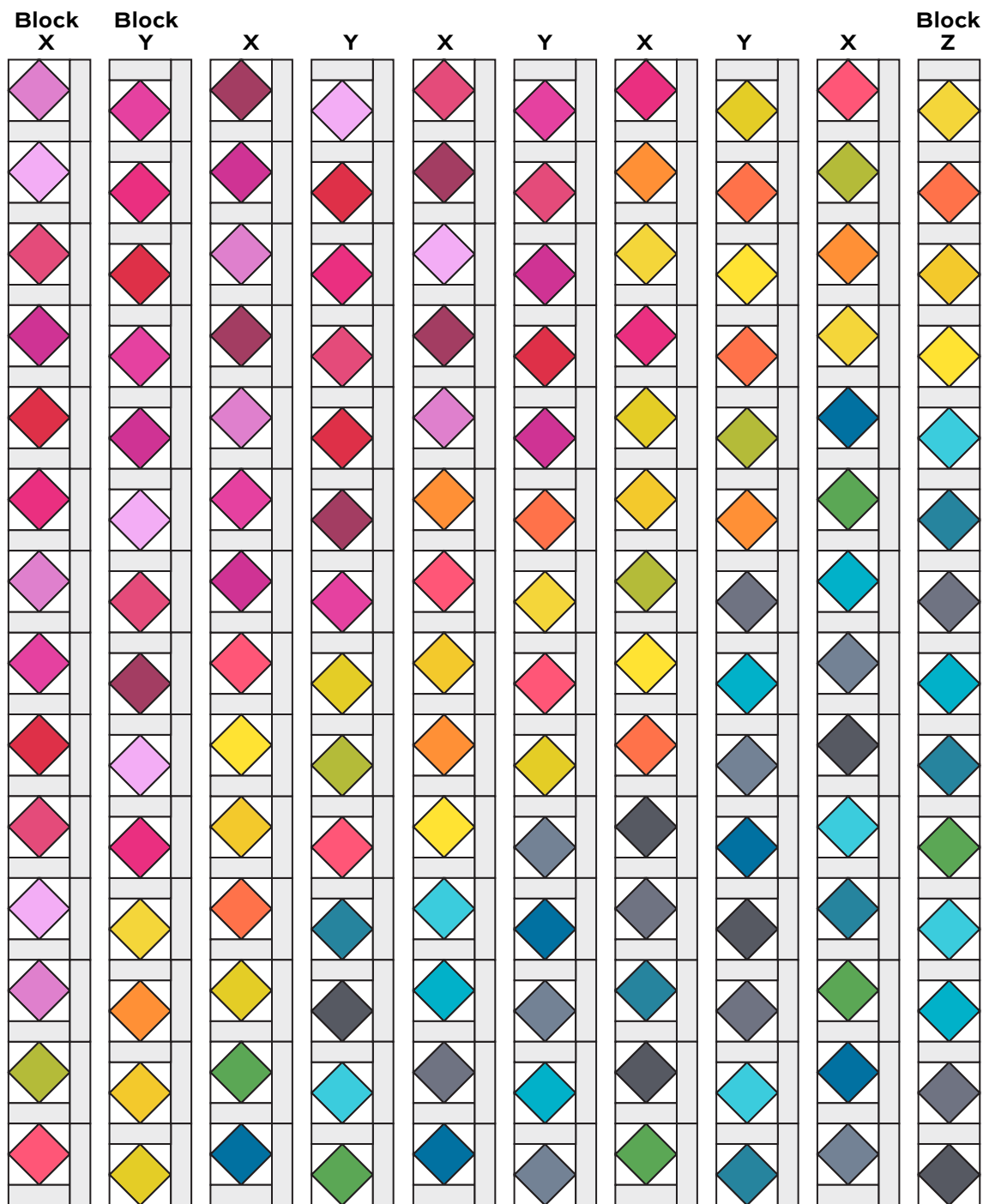
5. Referring to the Block Z diagram, sew a 5" strip to the top of 14 block centers. Make 14 Block Z and join them to make column 10. Sew to the right side of the quilt.



Block Z - Make 14

Finishing the Quilt

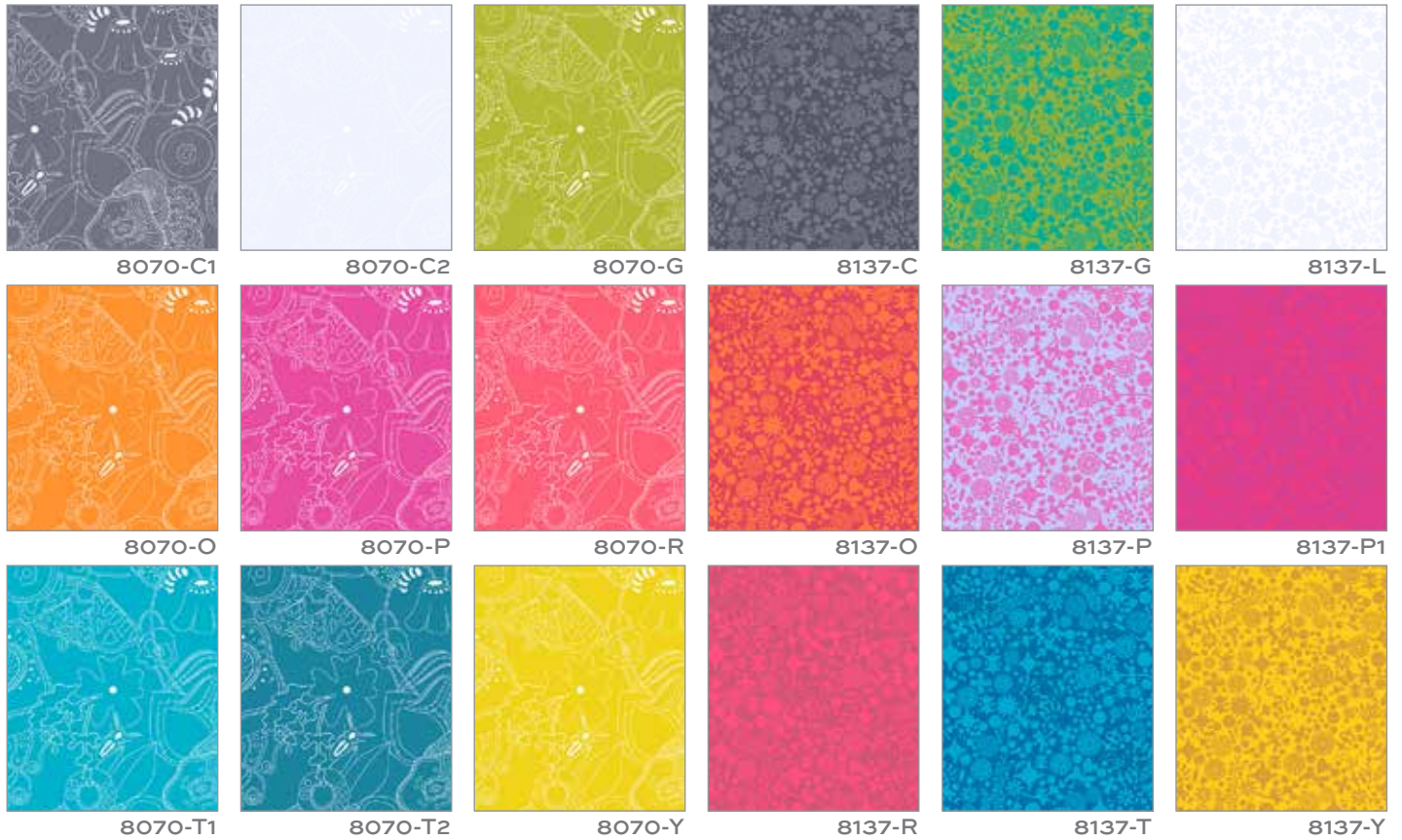
6. Layer the quilt with batting and backing and baste. Quilt in the ditch around the block patches. Bind to finish the quilt.



Quilt Diagram

Sun Print 2016

BY ALISON GLASS



Blend with fabrics from **Abacus** by Alison Glass



All fabrics are used in quilt pattern.
Fabrics shown are 25% of actual size.

Free Pattern Download Available

1384 Broadway New York, NY 10018
Tel. (800) 223-5678 • andoverfabrics.com

andover • makower uk
The Henley Studio